

Location X

Location Manager for Mac OS X
v2.0



© 2002 – 2003 Alex Keresztes and Greg Novick

Table of Contents

1. Installing Location X	3
2. Getting Familiar With the Location X Interface	4
3. Running Location X for the First Time	5
4. Adding a Location.....	5
5. Renaming a Location	6
6. Duplicating a Location	6
7. Removing a Location	6
8. Specifying a Location's Options	6
8.1. Configuring the QuickTime Option	6
8.2. Configuring the Time Zone Option	7
8.3. Configuring the Network Option.....	8
8.4. Configuring the Apple Mail Option	8
8.5. Configuring the Sound Level Option	9
8.6. Configuring the AppleScript Option	10
8.7. Configuring the Internet Option.....	11
8.8. Configuring the Energy Saver Option	11
8.9. Configuring the Entourage Option.....	12
8.10. Configuring the Shell Script Option.....	15
8.11. Configuring the Default Printer Option	15
9. Using the Capture Function	16
10. Switching Locations	17
11. Using the Location X Menu	19
12. Authorizing Location X Plug-ins	20

1. Installing Location X

Location X installation is a simple one-step procedure. After decompressing the drive image and double-clicking it (Apple's Disk Copy application will open and mount the drive image file), simply drag the Location X application to your hard drive's Application folder. The program will copy to your hard drive, and you can dispose of the drive image file.

To install Location X:

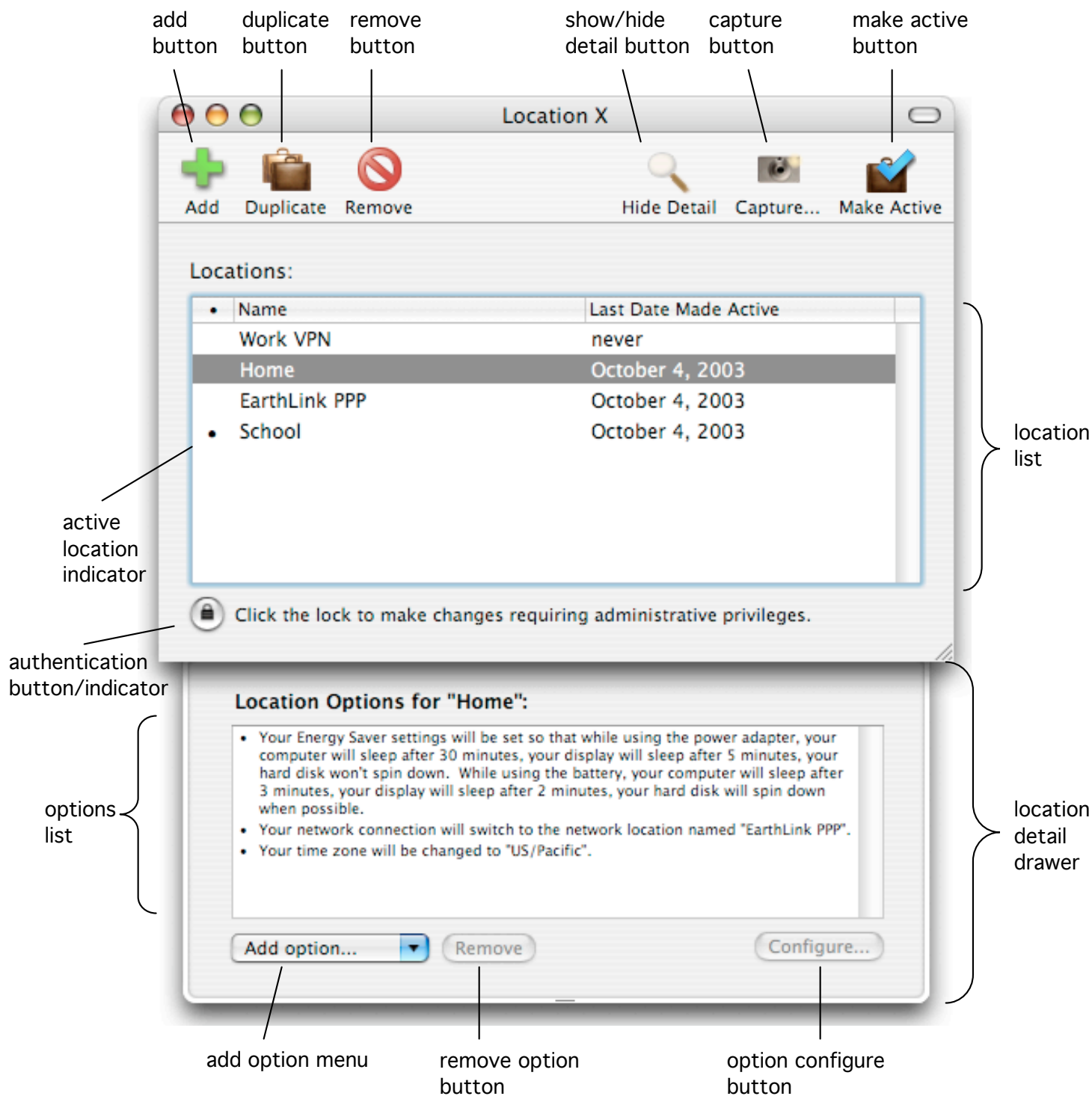
1. Download the Location X package from <http://homepage.mac.com/locationx>.
2. Your web browser may launch Stuffit Expander to decompress the package for you. If not, double click on the Location X.dmg.sit file .
3. After decompression, a drive image file will be present on your desktop. Double-click the file to launch Disk Copy. The drive image will be mounted and show up on your desktop.
4. In the window that appears, drag the Location X application icon to your hard drive's Applications folder.
5. Drag the Location X drive image and drive image file (Location X.dmg) to the trash.



locationx.dmg.sit

2. Getting Familiar With the Location X Interface

When you run Location X, you will be presented with the main Location X window.



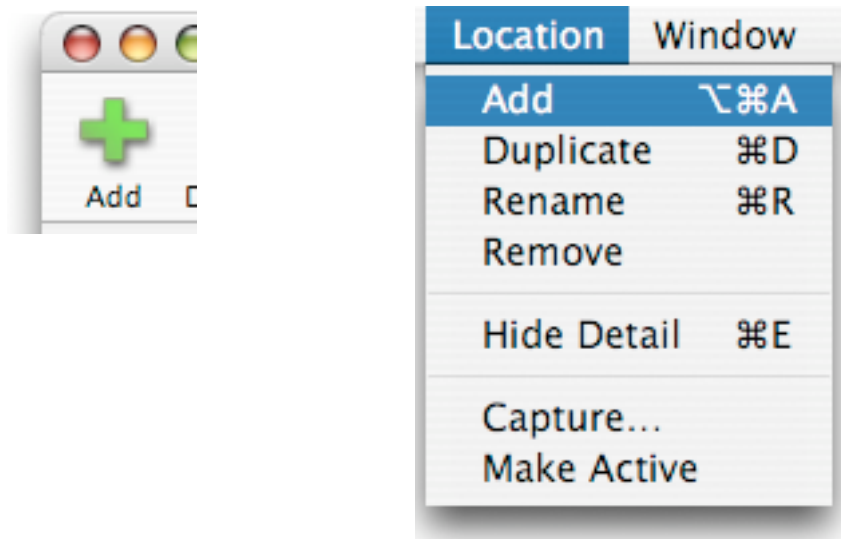
3. Running Location X for the First Time

The first time you run Location X, you will notice that a set of locations are already present in the location list. Location X creates a location for each *network location* which you have configured in the Network preference pane of the System Preferences application. You can see these locations by viewing the Location menu in the Apple menu. When you first run Location X creates its own locations corresponding to the network locations and configures each automatically to switch to the network location of the same name when you make the location active. You may edit or remove these locations as you wish, but they are setup for your convenience as you begin to use Location X.

4. Adding a Location

To add a location, click on the Add button in the toolbar, or choose “Add” from the Location menu.

A new location will be created, and you will be able to give it a name. To cancel the addition of a location, click on another location or hit the return key without entering a name. When you are finished entering a name for the location, hit the return key. Note that Location X will not allow two locations to have the same name.



5. Renaming a Location

To rename a location, double click on its name in the location list. Hit return when you are finished editing the location's name.

6. Duplicating a Location

You can duplicate a location, including all the settings that go along with it, by choosing the location to duplicate and clicking on the Duplicate button in the toolbar or choosing "Duplicate" from the Location menu. A new location will be created with the same settings as the one selected and will be automatically named by appending "copy" to the original name.

7. Removing a Location

You can remove a location from your list of locations by selecting it and clicking on the Remove button in the toolbar or "Remove" in the Location menu.

8. Specifying a Location's Options

The heart of Location X is its ability to change your computer's settings based upon location. You specify which settings you want to be changed by configuring various *location options*. To configure options for a location, select the location in the locations list. If the location detail drawer is not visible, click on the "Show Detail" button. Add to the list of location options by choosing an option from the "Add Option..." pop-up menu. A sheet will appear allowing you to configure the newly added option. The options list describes your configuration for each of the options you have added to your location. To change your configuration of a particular option, click on it in the list and click on the "Configure..." button. Note that your settings will be changed in the order they are described in the location options list. You can change the order in which your settings are changed by dragging the various option descriptions up or down in the options list.

8.1. Configuring the QuickTime Option

The QuickTime location option allows you to change your QuickTime connection speed when you switch locations. To set a connection speed for

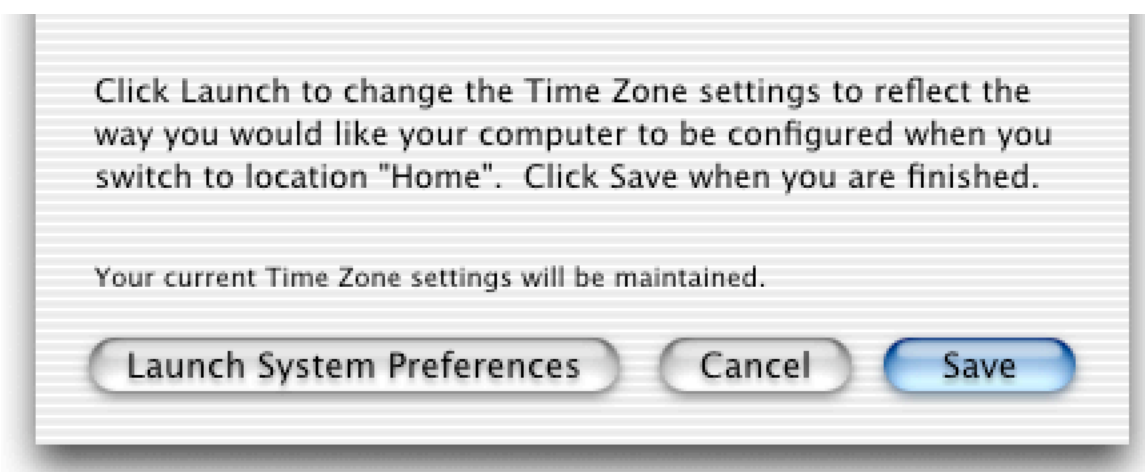
a location, choose “QuickTime” from the “Add Option...” menu of the location detail drawer. A configuration sheet will appear.



Click the Launch System Preferences button to open the System Preferences application. The QuickTime preference pane will appear. Change your proxy and/or connection speed settings to how they should be set in the location you are currently editing. Quit the System Preferences application. Your system will temporarily reflect these settings, but when you return to Location X and click the Save button, Location X will note your changes and then switch your previous settings back. Location X is then properly configured to change your QuickTime settings.

8.2. Configuring the Time Zone Option

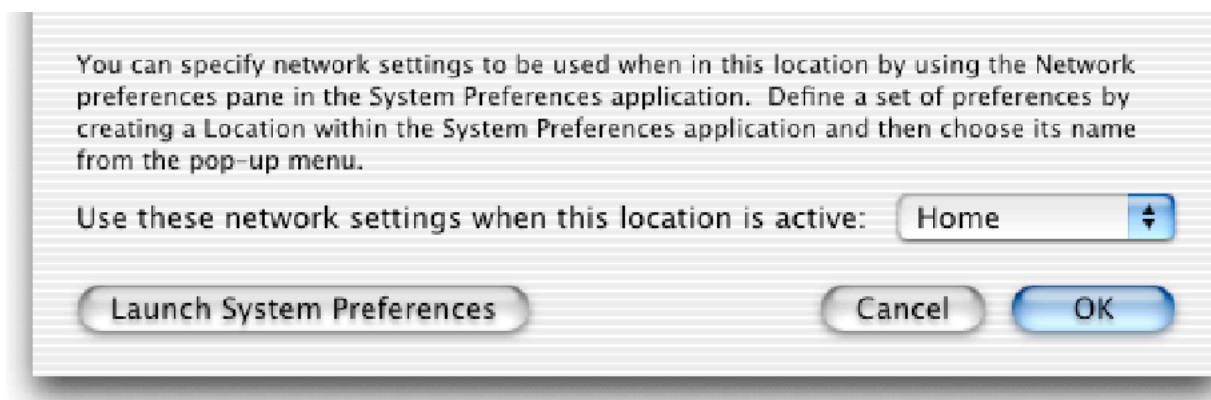
The Time Zone option allows you to change your time zone when you switch locations. To set a time zone for a location, add the Time Zone option to your location’s option list by choosing “Time Zone” in the “Add Option...” menu of the location detail drawer. A configuration sheet will appear.



Click the Launch System Preferences button to open the System Preferences application. The Date and Time preference pane will appear. Select the time zone in the Time Zone tab that you would like to switch to for the location you are currently editing. Your system will temporarily reflect these settings, but when you return to Location X and click the Save button, Location X will note your changes and then switch your previous time zone back. Location X is then properly configured to change your time zone.

8.3. Configuring the Network Option

The Network location option allows you to change all of your network settings when you change locations. To set a network configuration, add the Network option to your location's option list. A configuration sheet will appear.



The Network option configuration sheet lists all of your current Network Locations, as specified in the Network preferences pane of the System Preferences application. In the pop-up menu, choose a Network Location to which Location X will switch when this location becomes active. Location X uses this Network Location as a configuration set, as specified in the Network preferences pane. You can modify the Network Locations (including adding Network Locations, removing them, or changing their configuration(s)) by clicking on the Launch System Preferences button. When you are finished, click the Save button. Location X will note your changes and then switch your previous time zone back. Location X is then properly configured to change your Network Location.

8.4. Configuring the Apple Mail Option

The Apple Mail option allows you to change the preferences for the Mac OS X Mail client program. This is useful for choosing which mail accounts to check

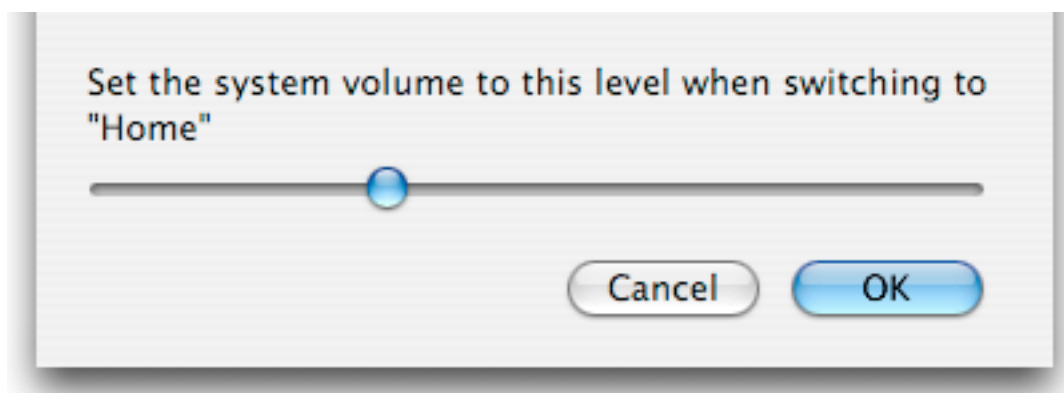
when you are in various locations. Note that this does not affect your actual e-mail storage, only the application's preferences. To set Mail settings for a location, add the Apple Mail option to your location's options list. A configuration sheet will appear.



Click the Launch Mail button to open the Mail application. Configure the Mail application with the settings that you would like to switch to for the location you are currently editing. After quitting the Mail application, your system will temporarily reflect these settings, but when you return to Location X and click the Save button, Location X will note your changes and then switch your previous Mail settings back. Location X is then properly configured to change your Mail settings.

8.5. Configuring the Sound Level Option

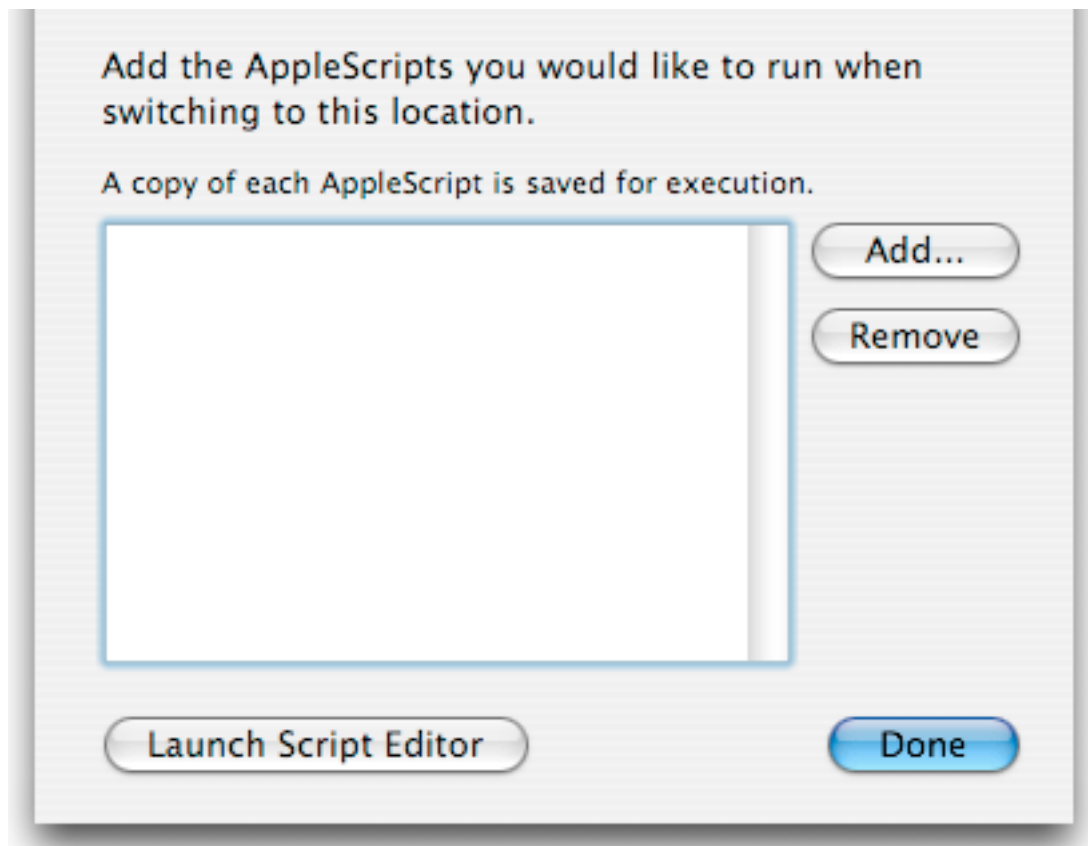
The Sound Level option allows you to change your computer's sound volume when you change locations. To set a sound volume for a location, add the Sound Level option to your location's options list. A configuration sheet will appear.



Drag the slider to the desired volume level and click the “OK” button. Location X is then properly configured to change your sound volume settings.

8.6. Configuring the AppleScript Option

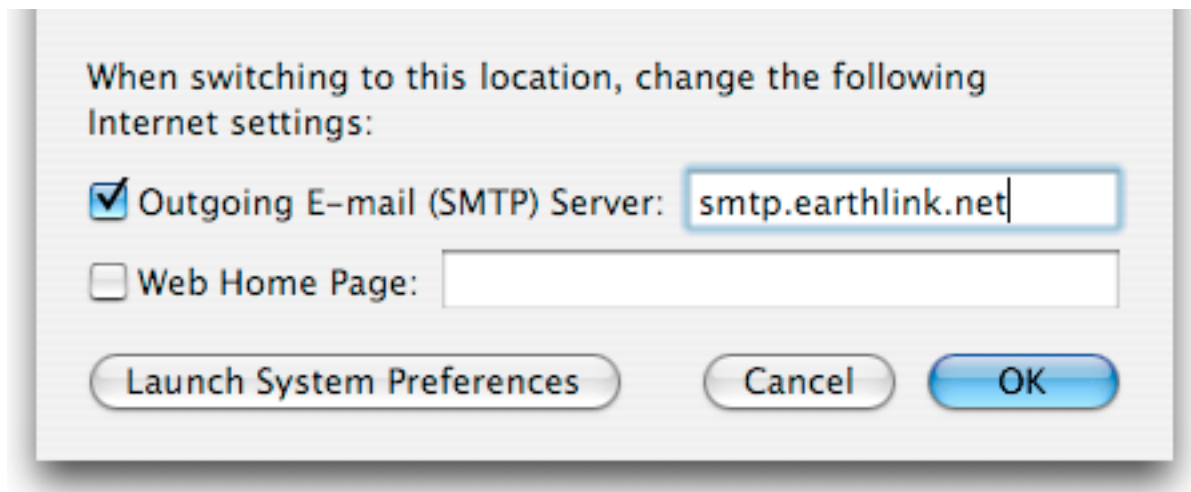
The AppleScript option allows you to execute a number of AppleScripts when you change locations. To execute AppleScripts when you change to a location, add the AppleScript option to the location’s options list. A configuration sheet will appear.



Click the “Add...” button to choose AppleScripts to be executed. The AppleScripts will be copied to your Location X preferences directory and will be executed in the sequence they appear in the configuration sheet. To specify a specific order of execution, add the AppleScript option to your location’s option list multiple times and configure each to execute the specific AppleScripts in the order you desire. Click the “Done” button in the configuration sheet to save your settings.

8.7. Configuring the Internet Option

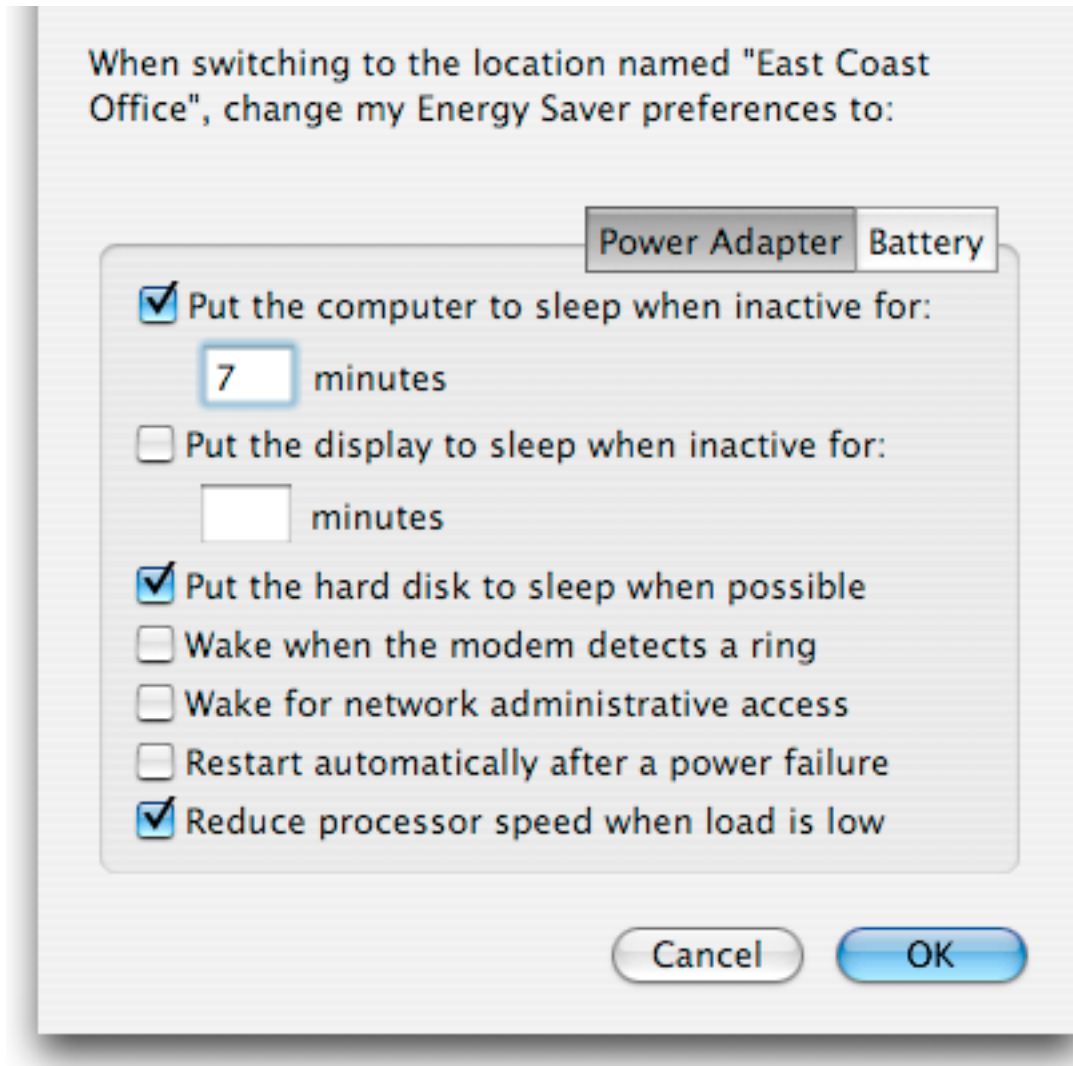
The Internet location option allows you to change your web browser's home page and your default SMTP (outgoing) e-mail server when switching locations. These settings are those reflected in the Internet preference pane of the System Preferences application in Mac OS 10.2. Web browsers such as Safari use this home page setting to determine what page to display when you open new browser windows. E-mail applications such as Eudora use the default SMTP server to determine which server to use to send outgoing e-mail. To change these settings when switching locations, add the Internet option to your location's options list via the "Add Option..." pop-up menu in the location detail drawer. A configuration sheet will appear.



Click on the checkbox next to the home page or SMTP server fields to indicate that you would like that setting to be changed. Enter the value to which you would like your settings changed in the field. If you do not check a particular setting, that value will not be affected when you switch locations. Click the "OK" button to save your configuration.

8.8. Configuring the Energy Saver Option

The Energy Saver option allows you to change your power management settings when you change locations. This includes most of the settings available in the Energy Saver preference pane of the System Preferences application, including separate settings for when you are using your battery or your power adapter if you are a portable user. To change power management settings when you switch locations, add the Energy Saver option to your location's option list. A configuration sheet will appear.



Change the settings in the sheet to reflect the way you want your power management settings set when you switch to this location. By checking the checkbox next to the sleep settings, your inactive sleep times will be changed to those in the corresponding minute fields. If they are unchecked, your sleep settings will not be affected when changing locations. Click “OK” to save your configuration.

8.9. Configuring the Entourage Option

You can change your Microsoft Entourage settings when you switch locations using the Entourage option. Add the Entourage option to your location’s options list by choosing it from the “Add Option...” menu in the location detail drawer. Location X needs to communicate with Microsoft Entourage in order to get information about your accounts and schedules, so if the Entourage application is not already running, Location X will open it when

you configure the Entourage option for any location, or if you switch to a location that includes the Entourage option in its options list. After adding the Entourage option, a configuration sheet will appear.

When switching to the location named "East coast Office",

SMTP Default Account Schedules Offline

set the outgoing (SMTP) mail server to:

smtp.earthlink.net

for these accounts:

Work E-mail
 Alumni Account
 DSL
 Mac.com E-mail

Use SSL

Override SMTP port:

Server requires authentication

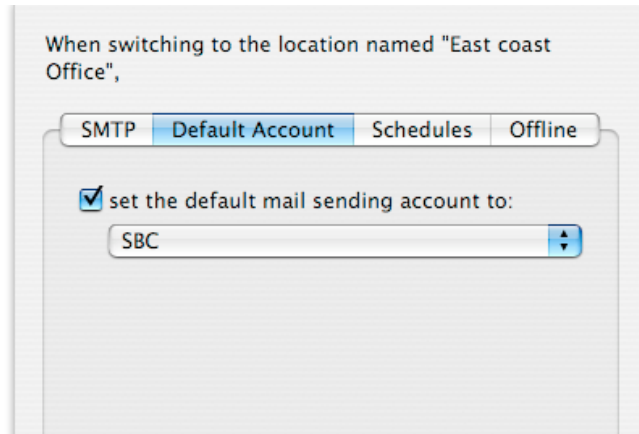
Username:

Password:

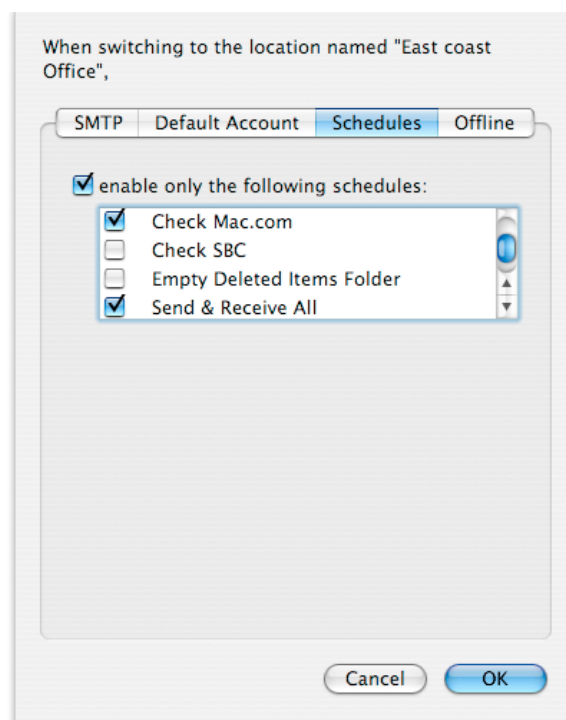
This password will not be stored encrypted

Cancel OK

The Entourage configuration sheet contains 4 tabs. The SMTP tab allows you to change the SMTP (outgoing) e-mail server for selected accounts. You can also specify whether or not to use SSL, use an alternate SMTP port, or enable or change the username and password required to contact the SMTP server.



The default account tab allows you to choose to switch which account is your default sending account when you change locations. If you check the checkbox, Location X will change your default account to the one you choose from the popup menu.

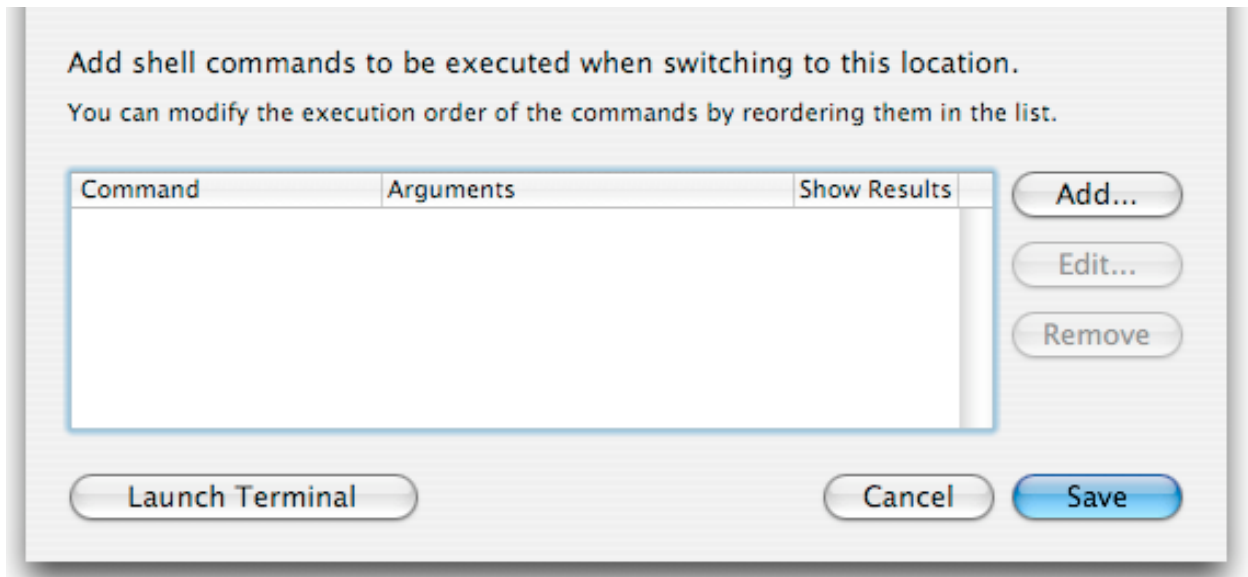


The schedules tab allows you to choose a set of schedules which should be enabled when you switch locations. If you click on the checkbox, only the accounts with checkmarks next to them in the schedule list will be enabled after you switch to this location.

Finally, the Offline tab allows you to set Entourage to “Work Offline” mode after you switch to this location.

8.10. Configuring the Shell Script Option

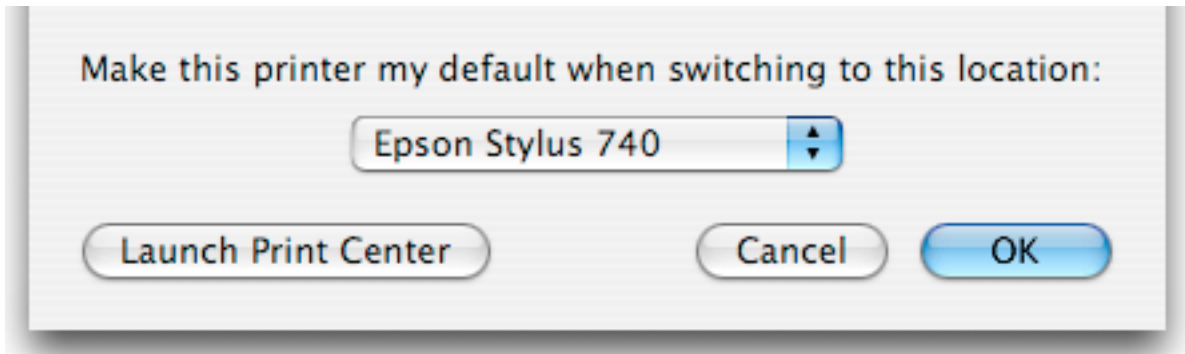
The Shell Script option allows you to execute UNIX shell scripts when you switch locations, and even view the output of the shell script. To add the Shell Script option to your location, add it to your location's options list in the location detail drawer. A configuration sheet will appear.



Add shell scripts to execute by clicking on the “Add...” button. You will be prompted for the complete path to the shell command and a list of arguments to be passed to the command. Click the “Show results...” checkbox if you would like Location X to display a window with the output of the command after it has been executed. Shell commands will be executed in the order they appear in the list. You can drag the commands up or down in the list to change their execution order. Alternatively, you can add the Shell Script option to your location's options list multiple times to have various shell commands execute at different points within your location switch.

8.11. Configuring the Default Printer Option

You can change your default printer when you change locations by adding the Default Printer option to your location's options list. The Default Printer option's configuration sheet looks like this:

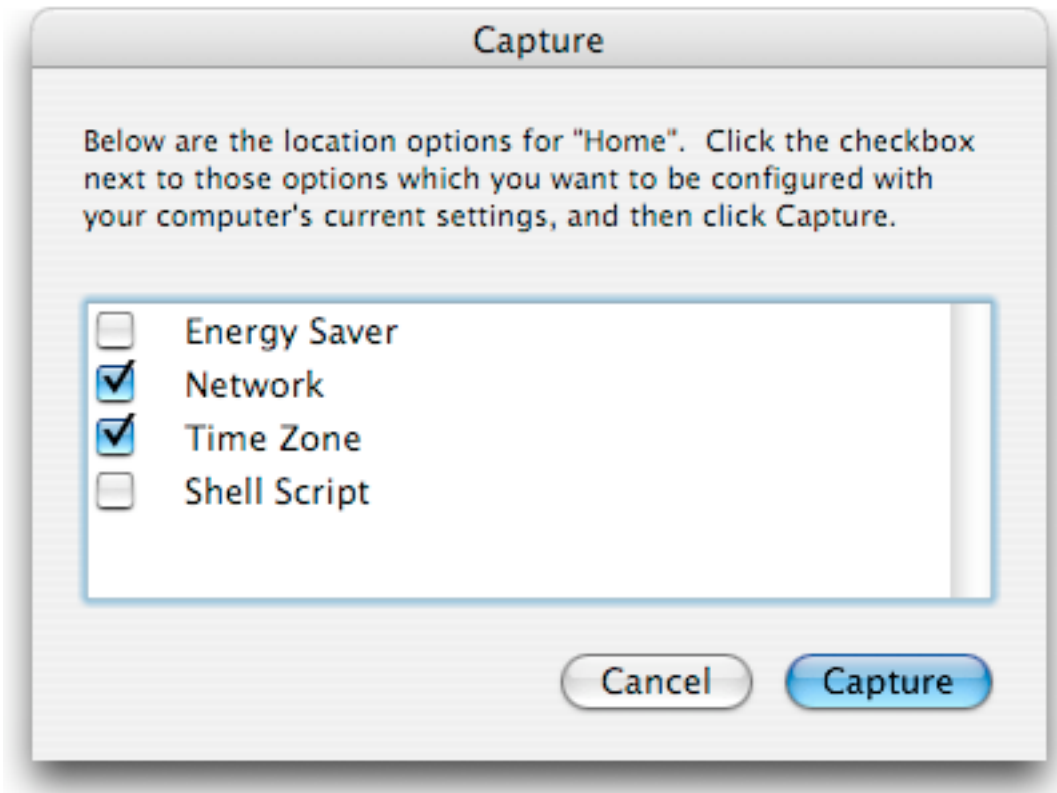


Choose the printer you would like to become your default in this location by selecting it from the popup menu. Click "OK" to save your selection.

9. Using the Capture Function

One easy way to configure a location is to configure your computer the way you would like it to be for that location, and then ask Location X to capture your computer's state and configure each of the options in your location's options list appropriately. This is done using the Capture function.

To use the Capture function, create a location and add the options you would like to be switched for this location to its options list in the location detail drawer. When the configuration sheets appear you can choose an arbitrary setting or dismiss them by clicking OK or Cancel. Then click on the Capture button in the toolbar or choose "Capture..." from the Location menu.



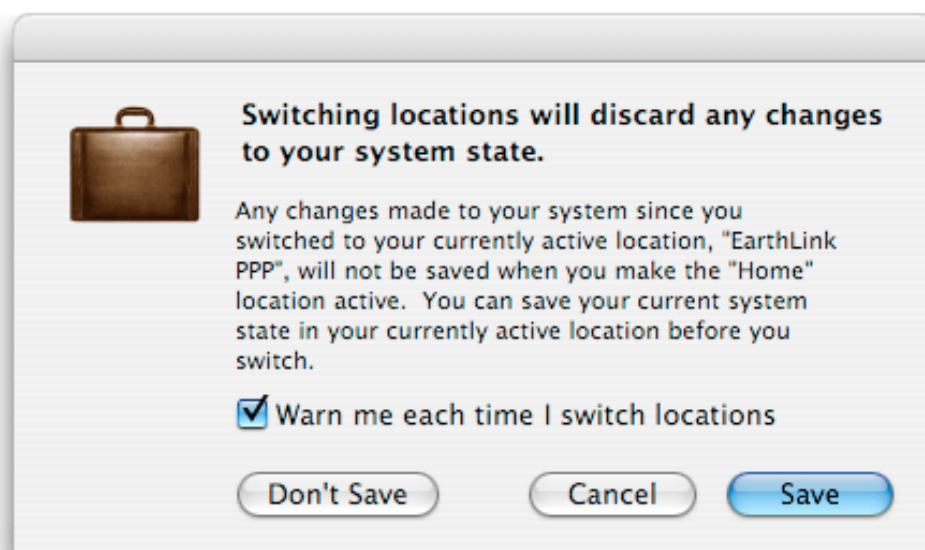
In the Capture dialog that appears, click on the checkbox next to the names of those options which you would like Location X to capture. If you place a checkbox next to a particular option, Location X will look at your computer's current setting for that option and make that setting your configuration for the currently selected location. Note that the Entourage, Shell Script, and AppleScript options cannot be captured. The plug-in names appear in the Capture dialog in the order you have specified them in the options list. If you have two instances of the same option in your options list, it will appear twice in the Capture dialog. The first entry will correspond to the first instance in the options list, and the second one will correspond to the second instance. Click the Capture button when you have chosen the options to capture, and Location X will save those settings for the current location.

10. Switching Locations

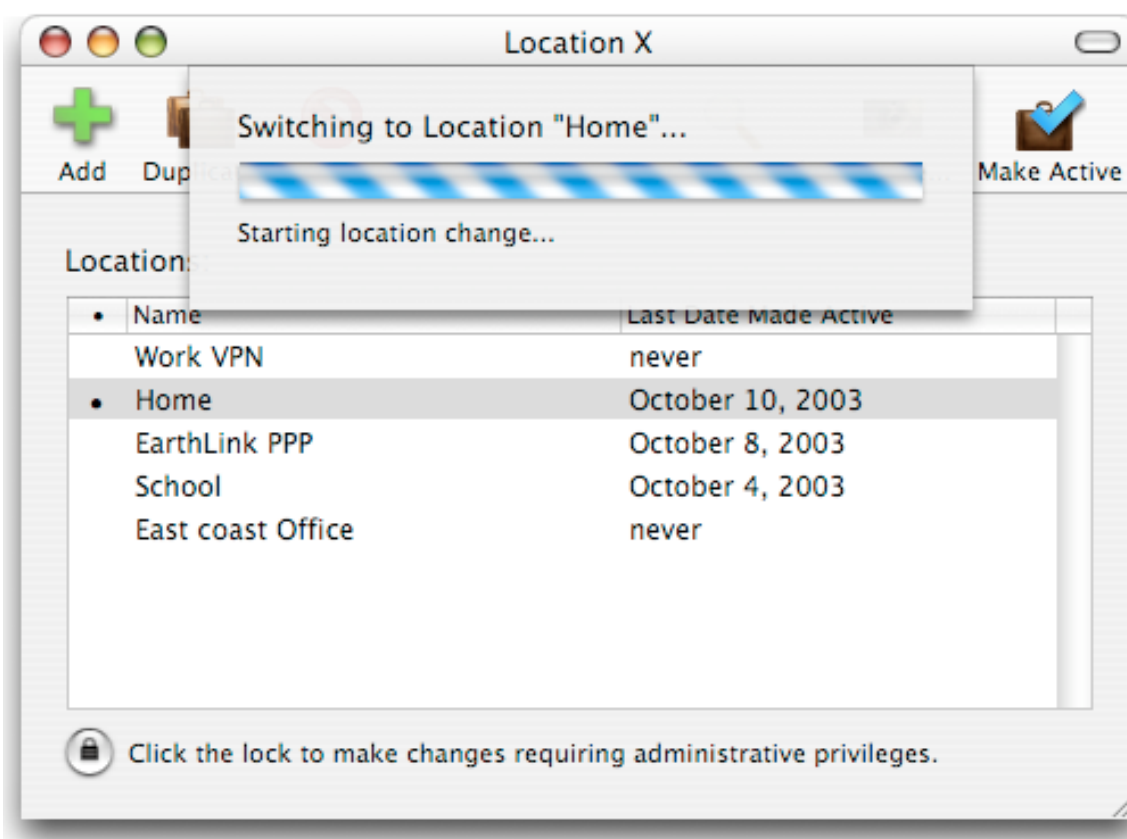
You switch locations by choosing the location to which you would like to switch and choosing Make Active from the Location menu or clicking on the Make Active button in the toolbar.

A dialog will remind you that if you have made any changes to your system configuration, they will not be saved in your current location unless you

explicitly choose to save them. Clicking the Save button will capture your current system state and save it as the configuration for your current location.

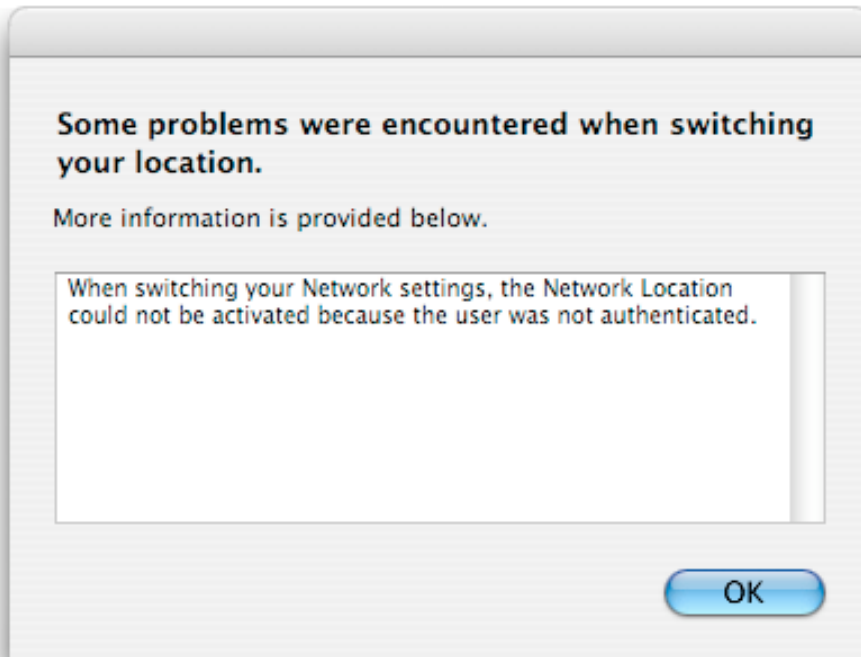


Clicking Don't Save will not save the changes you may have made to your system and will proceed with making the new location active.



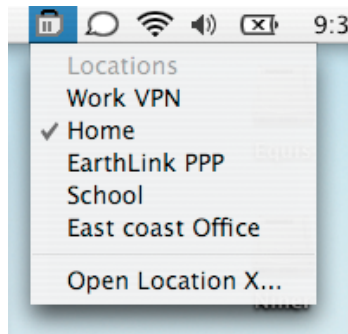
A sheet will emerge from the Location X window and indicate the progress of your location change. Depending on the options you have enabled for the new location, Location X may require you to authenticate yourself so that it may make the proper changes to your system.

If some location options could not be properly set for your new location, an error dialog will appear at the end of the location change to inform you of what may have gone wrong.



11. Using the Location X Menu

Location X includes a system-wide menu that can be enabled to allow you to quickly and easily change locations from anywhere at any time when using your computer. To enable the menu, check the “Show locations in menu bar” checkbox in the General pane of the Preferences window (choose “Preferences...” from the Location X application menu).



The menu appears in the upper right corner of your computer's menu bar. Each of your locations is displayed. Choosing one will switch you to that location (this is the same as choosing "Make Active" from within Location X). You can also open the Location X application by choosing "Open Location X..."

12. Authorizing Location X Plug-ins

Location X uses an authorization-based security model to reduce the number of times you are required to enter your password. You authorize individual Location X plug-ins in the Security pane of the Preferences window (choose "Preferences..." from the Location X application menu). Place checkboxes next to the plug-ins you wish to authorize, and click the Apply button. By authorizing a plug-in, you are designating it as "trusted" and you allow it to change its corresponding system settings without asking your permission each time you switch locations. Note that if your location contains a location option whose plug-in you have not authorized, you will be prompted for your password when you switch to that location. However, if you have authorized the plug-ins for all of the location options in a location, when you switch to it, you will not be asked for your password.

